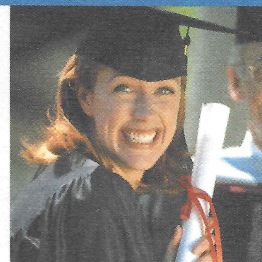
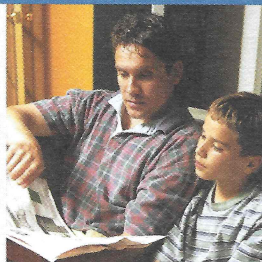
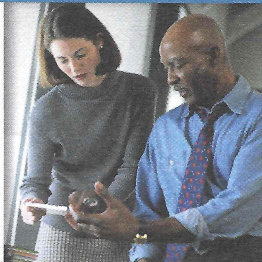


CAREER EXPLORATION INVENTORY



by John J. Liptak, Ed.D. **Fifth Edition**

A Guide for Exploring Work, Leisure, and Learning



Name

Date

Age

Gender

Introduction to the *CEI*

Your career is a combination of your work, leisure, and learning experiences and opportunities. When planning your career, considering all three is important.

The *CEI* helps you identify your interests in work, leisure activities, and learning opportunities and then helps you develop a plan that will lead to career success and satisfaction. The *CEI* will also help you find information on occupations, leisure activities, and educational programs that match your interests.

The *CEI* consists of seven steps. Begin at Step 1 as you open the folder, and complete the steps in order. Use a pencil or an erasable pen in case you want to make corrections.



ISBN: 978-1-59357-980-7. © 2015 by JIST Publishing, Inc. 875 Montreal Way, St. Paul, MN 55102. Email: info@jist.com.
Website: www.JIST.com. All rights reserved. Duplication in any form is prohibited. A free administrator's guide and other support materials are available at www.JIST.com/resources/support-materials.