



QUAY

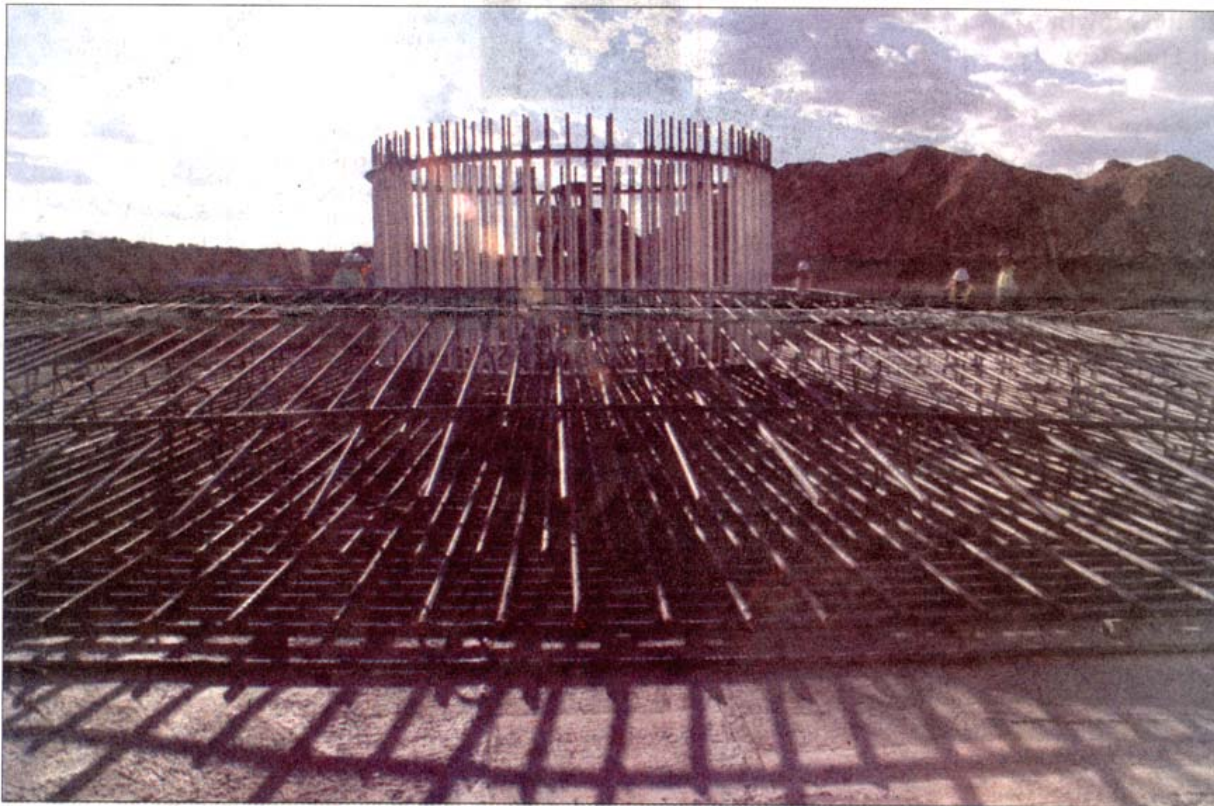
County Sun

A FREEDOM NEWSPAPER

Wednesday

September 24, 2008

Rebar skeleton to support Mesalands wind turbine



About a dozen men are fitting rebar together in a circular lattice pattern that will be covered with concrete to support Mesalands Community College's wind turbine on south 11th Street. It will take about 40 truckloads of concrete to construct the base which is about 40 feet across and 9 feet deep, college officials said. The turbine will be installed next month.

QCS Photo:
Chelle Delaney